



CATELLA PROPERTY GERMANY

Corporate Finance *2018*





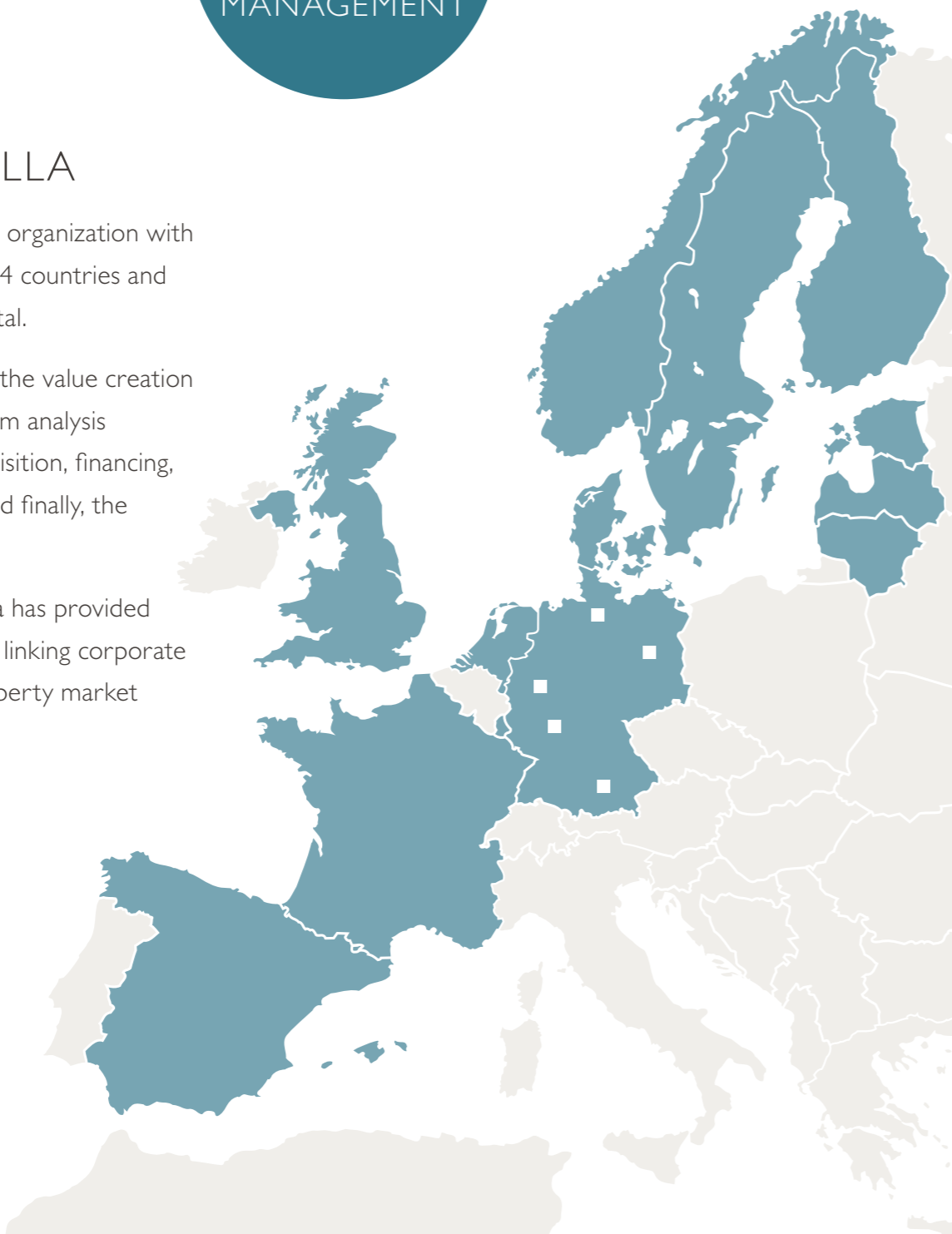
ABOUT CATELLA

Catella is a pan-European organization with strong local presence in 14 countries and with access to global capital.

We manage all phases of the value creation process in property – from analysis through transaction, acquisition, financing, strategic management, and finally, the successful exit.

For over 25 years, Catella has provided a unique advisory service linking corporate finance with detailed property market knowledge.

www.catella.com



Offices IN TOP 5 GERMAN CITIES

MANAGEMENT



DIANE BECKER
CEO

OFFICE BERLIN



BRIGITTE BERNER
Director



BORIS SCHULMANN
Director



FREDERIC H. FELDMANN
Senior Advisor

OFFICE DUSSELDORF



JÖRG LANGENSIEPEN
Head of Investment
Dusseldorf



CHRISTOF HALWER
Partner



GEORG ZINTZEN
Senior Advisor



TOBIAS LANDSCHEITEN
Senior Advisor Residential

OFFICE FRANKFURT



JEREMY WATERS
Partner



ALEXANDER POLSAK
Advisor

OFFICE HAMBURG



RALF W. JACOBS
Director



SIMON RICKERS
Senior Advisor

OFFICE MUNICH



CHRISTIAN ROSEN
Head of Investment
Munich



ALEXANDER GOEBEL
Director

CATELLA PROPERTY GERMANY

Catella Property works with real-estate investors, institutional and private clients, German and International.

Catella Property has been operating in the German market for 25 years, providing taylor-made solutions for all stages of property investments: research, valuation, sales and acquisitions.

A renowned research team with a forward thinking attitude and an experienced team of analysts complete our service.

We are also able to support capital market transactions involving debt and equity.

More than 30 professionals covering the whole of Germany with offices in Berlin, Dusseldorf, Frankfurt, Hamburg and Munich.



CLAUDIA KIMMEL
Marketing & PR Manager

Office



STATE-OF-THE ART OFFICE DEVELOPMENT "AREA BOX SEVEN" IN BERLIN

LOCATION
Berlin-Friedrichshain in prime location
USP
Off-market transaction for a multi-let building



OFFICE DEVELOPMENT "FRANKENCAMPUS 146" IN NUREMBERG

LOCATION
Excellent location in the City of Nuremberg
USP
Sole agent for a competitive bidding process



Retail

PRIME RETAIL PROPERTY IN HISTORICAL AREA IN HEIDELBERG

LOCATION
Heidelberg prime pedestrian area (in historic district)
USP
Off-market deal in prime location

Residential



RESIDENTIAL BUILDING IN DUSSELDORF

LOCATION
Prime suburban area within the City of Dusseldorf
USP
Transaction at a remarkable low yield level



RESIDENTIAL BUILDING IN DUSSELDORF

LOCATION
Preferred suburban area within City of Dusseldorf
USP
Perfect building incl. potential to increase value



Student Housing



STUDENT HOUSING PORTFOLIO "HEADQUARTER" Nationwide > EUR 150 m

LOCATIONS
– Frankfurt (2 assets)
– Muenster
– Darmstadt
– Dresden
USP
One of the largest Student Housing transactions (>1,250 beds) in Germany 2017



STUDENT HOUSING "A-RESIDENZ" IN BERLIN

LOCATION
Berlin close to the Airport Tegel
USP
Re-development of large Student Housing Property > 330 beds



Logistics Light Industrial

**MODERN
BUSINESS PARK
PROPERTY
IN COLOGNE**

LOCATION
Cologne-Gremberghoven
close to Airport Cologne / Bonn

USP
Latest generation of "G-I-P"
in powerful location for
airfreight services



Health Care

**HEALTH CARE
PORTFOLIO**
> EUR 170 m

LOCATIONS
17 nursing and care homes mainly in the
Federal Countries North Rhine-Westphalia
and Schleswig Holstein.

USP
One of the best German operators with
leases fixed for 30 years.
The global portfolio offers approximately
1,500 beds, spread over 75,000 sqm.



Catella Germany Research is headed by Dr. Thomas Beyerle who is responsible for pan-European research across the Catella Group. He is renowned in the German real estate market and has been a leading commentator on the real estate market for over 20 years.

Catella provides high-end market analysis products and services for the property market.

We use our perspectives from the financial markets and experience from investment banking to create truly forward-looking research.

Research 7

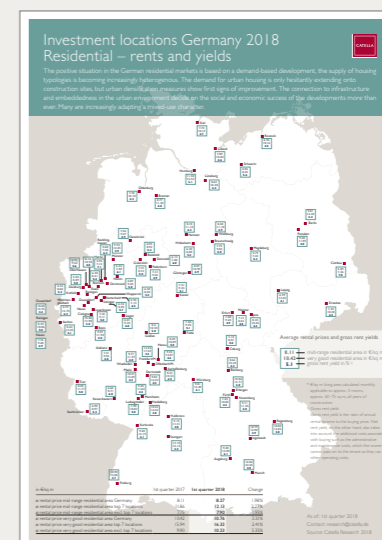
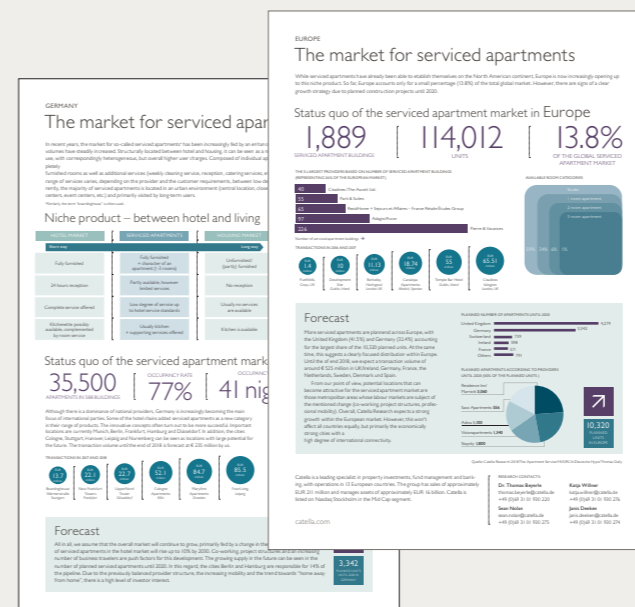
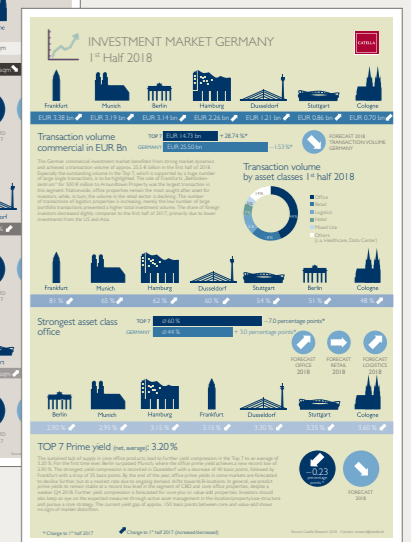
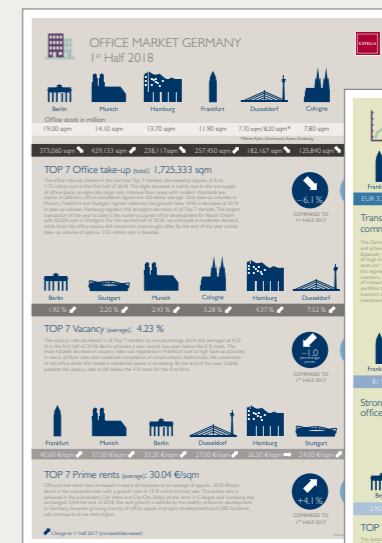
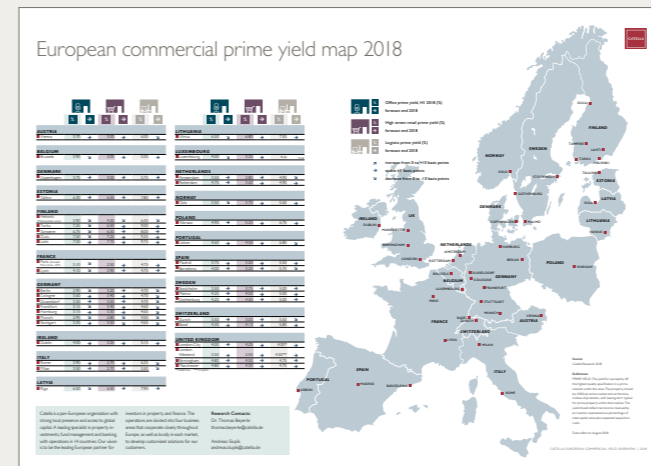
RESEARCH



DR. THOMAS BEYERLE
Head of Group Research



ANDREAS SLUPIK
Analyst Research



Our offices

Berlin

Kranzler Eck Berlin, Kurfürstendamm 22
10719 Berlin

Tel.: +49 (0)30 31 01 93-0

Fax: +49 (0)30 31 01 93-109

Dusseldorf

Hofgarten Palais, Bleichstrasse 8 – 10
40211 Dusseldorf

Tel.: +49 (0)211 527 00-0

Fax: +49 (0)211 527 00-110

Frankfurt

Marienstrasse 15

60329 Frankfurt

Tel.: +49 (0)69 310 19 30-0

Fax: +49 (0)69 310 19 30-107

Hamburg

Neuer Wall 39

20354 Hamburg

Tel.: +49 (0)40 21 111 28-0

Fax: +49 (0)40 21 111 28-100

Munich

Kaufingerstrasse 11

80331 Munich

Tel: +49 (0)89 54 59 56-0

Fax: +49 (0)89 54 59 56-100



The link between
property and finance™

info@catella.de

www.catella.de