



Catella Property  
Investment  
Year 2016

# Catella Property

Catella Property offers its services to non-residential real-estate investors, institutional and private clients, whether French or International, within the context of sales or acquisitions advisory missions\* of all over France and Europe.

\*(offices, retails, logistics, light industrial, nursing homes, hotels, clinics)

Catella Property runs an experienced and highly qualified team (operating the French market for 15 years and realizing more than 450 transactions) able to deal with the most challenging and complex business cases concerning sale / acquisition of single asset, asset portfolio or share deal, sale & lease back mission or forward funding projects ("VEFA", "CPI", "MOD").

> € 20M TRANSACTIONS



**PUSHED SLAB** - PARIS 13  
Sale of 18 286 sq.m of offices- BANQUES POPULAIRES to AVIVA

< € 20M TRANSACTIONS



**4-6 RUE DE LASTEYRIE** - PARIS 16  
Sale of 1 311 sq.m of offices - FONCIÈRE DE PARIS to CARMF

Today, 26 professionals are dedicated to our clients, through different teams:

- A **tertiary “Ile-de-France”** team covering the Greater Paris Area and spread between deals under € 20 Million and deals of € 20 Million and over,
- A **tertiary “Region”** team covering the entire French territory through its offices in Lyon and Nantes,
- A **Retail** team,
- A **transversal analysts** team with the most advanced analysis tools,
- A in-house **Marketing & Communication** team.

Catella Property covers every kind of real-estate risks expected by investors: core, core +, value add, opportunistic.

## KEY FIGURES

**€ 24.5 BILLION**

Investment volume since 2001

**€ 1.75 BILLION**

Investment volume in 2015

## 59 TRANSACTIONS

in 2015, through mandates assigned by :

- SCPI/OPCI
- Insurance companies
- Asset Managers
- Funds
- Private investors

### REGIONS



**MEDICREA - RILLEUX LA PARE**  
Sale of **7 783 sq.m** of offices (“VEFA”)  
6<sup>EME</sup> SENS to MUTUELLE EPARGNE RETRAITE



**6-8 BD RASPAIL / 62-66 RUE DE GRENELLE - PARIS 7**  
Sale of **1 519 sq.m** of retail - EMERIGE to PRIMONIAL

### RETAIL



**LE MAZAGRAN** - PARIS 13 / GENTILLY  
Sale of 15 022 sq.m of offices - GECINA to AMUNDI



**M7** - PARIS 13  
Sale of 17 450 sq.m of offices - MEAG to SOGECAP



**LA PORTE DU PARC** - SAINT-OUEN  
Sale of a 11 663 sq.m of offices - PRIMONIAL to SOGECAP



**DCNS** - BREST / GUIPAVAS  
Sale of 9181sq.m of offices ("VEFA") - LAMOTTE to MOORPARK



**BONNE ENERGIE - NANTERRE**  
Sale of 11 408 sq.m of offices ("VEFA")  
PRD to STANDARD LIFE



**ART & FACT 2.0 - RUEIL MALMAISON**  
Sale of 16 250 sq.m of offices ("VEFA") -  
BOUYGUES / BNP to CREDIT AGRICOLE ASSURANCES



**38 / 38 BIS RUE BOISSIÈRE - PARIS 16**  
Sale of 798 sq.m of offices - TERROT to PREVOIR



**6 RUE BEAUBOURG - PARIS 4**  
Vente de 5 093 sq.m of offices and retails - LFPI to SOFIDY

# Team



Emmanuel SCHREDER  
**CEO of Catella France**  
[emmanuel.schreder@catella.fr](mailto:emmanuel.schreder@catella.fr)



Stéphane GUYOT-SIONNEST  
**CEO of Catella France**  
[sgs@catella.fr](mailto:sgs@catella.fr)



Arnaud de SORDI  
**Partner**  
**Head of National Investment**  
[arnaud.de-sordi@catella.fr](mailto:arnaud.de-sordi@catella.fr)



Diane BECKER  
**Partner**  
**Head of International Investment**  
[diane.becker@catella.fr](mailto:diane.becker@catella.fr)

## IDF / > € 20M



Vanessa GUYOT-SIONNEST  
**Partner - Deal Leader**  
[vgs@catella.fr](mailto:vgs@catella.fr)



Delphine MUTTERER  
**Partner - Deal Leader**  
[delphine.mutterer@catella.fr](mailto:delphine.mutterer@catella.fr)



Audrey ALFANDARI  
**Deal Leader**  
[audrey.alfandari@catella.fr](mailto:audrey.alfandari@catella.fr)

## IDF / < € 20M



Julien BRUNET  
**Head of < 20M€**  
[julien.brunet@catella.fr](mailto:julien.brunet@catella.fr)



Raphaël AMOURETTI  
**Partner - Deal Leader**  
[raphael.amouretti@catella.fr](mailto:raphael.amouretti@catella.fr)

## REGIONS



Damien DOUBLET  
**Head of Lyon Office**  
[damien.doublet@catella.fr](mailto:damien.doublet@catella.fr)



Sylvain LEBOEUF  
**Head of Nantes Office**  
[sylvain.leboeuf@catella.fr](mailto:sylvain.leboeuf@catella.fr)



Martin MONNET  
**Deal Leader - Lyon Office**  
[martin.monnet@catella.fr](mailto:martin.monnet@catella.fr)



Grégoire ONILLON  
**Analyst - Deal Leader Junior**  
**Lyon Office**  
[gregoire.onillon@catella.fr](mailto:gregoire.onillon@catella.fr)

## RETAIL



Valérie GUEZ  
**Head of Retail**  
[valerie.guez@catella.fr](mailto:valerie.guez@catella.fr)

## ANALYSTS



Mélanie BALLU  
Senior Analyst



Marion BERTRAND  
Senior Analyst



Henri GUILLAUME  
Analyst



Hadrien FLON  
Analyst



Faustine SCHREDER  
Analyst



Mary DAVID DIOT  
Analyst - Lyon Office



Helena BIANCARDINI  
Analyst - Retail

## ADMINISTRATION

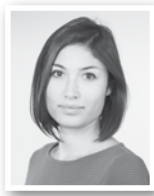


Valérie GRANDIN  
Team Assistant

## MARKETING & COMMUNICATION



Océane VINSON  
Marketing & Communication  
Manager



Marine ROLAND  
Marketing & Visual  
Communication Manager



Julien VAZ  
Graphic Designer



PARIS

4 rue de Lasteyrie - 75116 Paris  
+33 (0)1 56 79 79 79

LYON

Tour Oxygène  
10/12 boulevard Vivier Merle - 69003 Lyon  
+33 (0)4 81 76 32 94

NANTES

Immeuble Skyline  
22 mail Pablo Picasso - 44000 Nantes  
+33 (0)2 40 95 36 54

[www.catella.fr](http://www.catella.fr)